

AREAS ARE REFERENCED FROM SURFACE WATER MANAGEMENT REPORT ANDPET SUBDIVISION 16TH AVE. E. CITY OF OWEN SOUND PREPARED BY GAMSBY AND MANNEROW

LEGEND

- - - Proposed Drainage Areas
- Catchment ID
- Drainage Area
- ▽ Telfer Creek Pond Locations
- Telfer Creek Flow Node

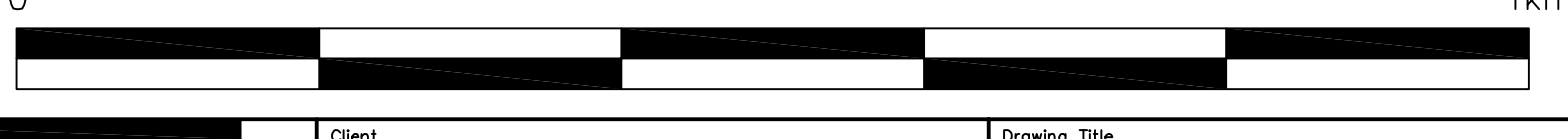
LAND USE LEGEND

- Residential
- Downtown Commercial
- Regional Shopping Centre
- East City Commercial
- West City Commercial
- Arterial Commercial
- Waterfront Mixed Use
- Industrial
- Institutional
- Open Space
- Rural
- Hazardous Lands
- Escarpment Natural
- Escarpment Protection
- Escarpment Rural
- Escarpment Urban

SWM CRITERIA FOR TELFER CREEK

- QUALITY CONTROL TO MOE MARCH 2003 SWM POND CRITERIA ENHANCED LEVEL OF PROTECTION FOR ALL DEVELOPING LANDS.
- QUANTITY CONTROL (POST TO UNIT FLOW RATES-TABLE 3) FOR ALL DEVELOPING LANDS
- PROPOSED CASH IN LIEU OF QUANTITY CONTROL PONDS NORTH OF TO ASSIST WITH EROSION PROTECTION WORKS.
- OIL GRIT SEPARATOR AND TREATMENE TRAIN TO ENHANCED LEVEL OF PROTECTION FOR SITES LESS THAN 5ha

NOTE: TOTAL DRAINAGE AREA TO OUTLET AT 20th AVE E = 433ha



1. This drawing is the exclusive property of R. J. Burnside & Associates Limited and the reproduction of any part without prior written consent of this office is strictly prohibited.
 2. The contractor shall verify all dimensions, levels, and datum on site and report any discrepancies or omissions to this office prior to construction.
 3. This drawing is to be read and understood in conjunction with all other plans and documents applicable to this project.
 4. Do not scale the drawings.

No.	Issue / Revision	Date
1.	Draft Submission	October 15, 2007
2.	Final Submission	January 2008

BURNSIDE
 R. J. Burnside & Associates Limited
 3 Ronell Crescent, Collingwood, Ontario
 telephone (705) 446-0515 fax (705) 446-2399
 web www.rjburnside.com

Client
CITY OF OWEN SOUND
 808 SECOND AVENUE E.
 OWEN SOUND, ONTARIO
 N4K 2H4

Drawing Title		Drawing No.
TELFER CREEK		SWM4
PROPOSED SWM PLAN		
Drawn By J.D.R.	Checked By D.M.	Project No. MCG 10665
Scale 1:5,000		