

NOTES:

1. THE LOCATION OF EXISTING WATER SERVICES ARE SHOWN SCHEMATICALLY ONLY. CONTRACTOR IS TO FIELD LOCATE WATER SERVICE AT PROPERTY LINE BEFORE CONNECTING NEW SERVICE TO MAIN.
2. EXISTING UNDERGROUND BELL TELEPHONE AND UNION GAS LOCATIONS ARE APPROXIMATE ONLY AND BASED ON BELL CANADA AND UNION GAS OFFICE RECORDS AND NOT ON ACTUAL FIELD LOCATES.
3. EXISTING SANITARY SEWER SERVICE LATERALS ARE NOT SHOWN ON PLAN AND ARE TO BE LOCATED BEFORE DIGGING BEGINS.
4. CONTRACTOR TO PROVIDE EROSION PROTECTION AND SILT CONTAINMENT AT ALL CATCH BASINS.
5. CONTRACTOR TO LOCATE ALL CURBSTOPS, REMOVE & REPLACE EXISTING SERVICE TO PROPERTY LINE, AS DIRECTED.
6. CONTRACTOR TO REPLACE WITH NEW, ALL STRUCTURE FRAMES, GRATES & COVERS (CBS, STORM & SANITARY MHS) AND ADJUST TO NEW GRADES.
7. CONTRACTOR TO CONNECT ALL EXISTING 6" OR LARGER DRAINS TO ROAD SUB-DRAIN, AS DIRECTED.



City of Owen Sound

BM#72U267 ELEV=178.479

BLACK CLAWSON KENNEDY, A BRICK BUILDING ON 1 AVENUE WEST OPPOSITE C.N. STATION, TABLET IN NORTHEAST CONCRETE FOUNDATION, 6.83m SOUTHWEST OF NORTH CORNER, 90cm BELOW BRICKWORK AND 87cm SOUTHWEST OF SOUTHEAST EDGE OF A LARGE DOOR. TBM: TOP OF FLANGE FIRE HYDRANT 2D125 LOCATED ADJACENT TO #900 10TH AVENUE EAST ELEV=243.76.

CAUTION:

THE POSITION OF POLE LINES, CONDUITS, WATERMANS, SEWERS AND OTHER UNDERGROUND AND OVERGROUND UTILITIES AND STRUCTURES IS NOT NECESSARILY SHOWN ON THE CONTRACT DRAWINGS, AND, WHERE SHOWN, THE ACCURACY OF THE POSITION OF SUCH UTILITIES AND STRUCTURES IS NOT GUARANTEED. BEFORE STARTING WORK, THE CONTRACTOR SHALL INFORM HIMSELF OF THE EXACT LOCATION OF ALL SUCH UTILITIES AND STRUCTURES, AND SHALL ASSUME ALL LIABILITY FOR DAMAGE TO THEM.

DATE	REVISION / ISSUE
09/02/24	TENDER ISSUE
09/01/27	CITY REVIEW
YY/MM/DD	DESCRIPTION
DATE	REVISION / ISSUE

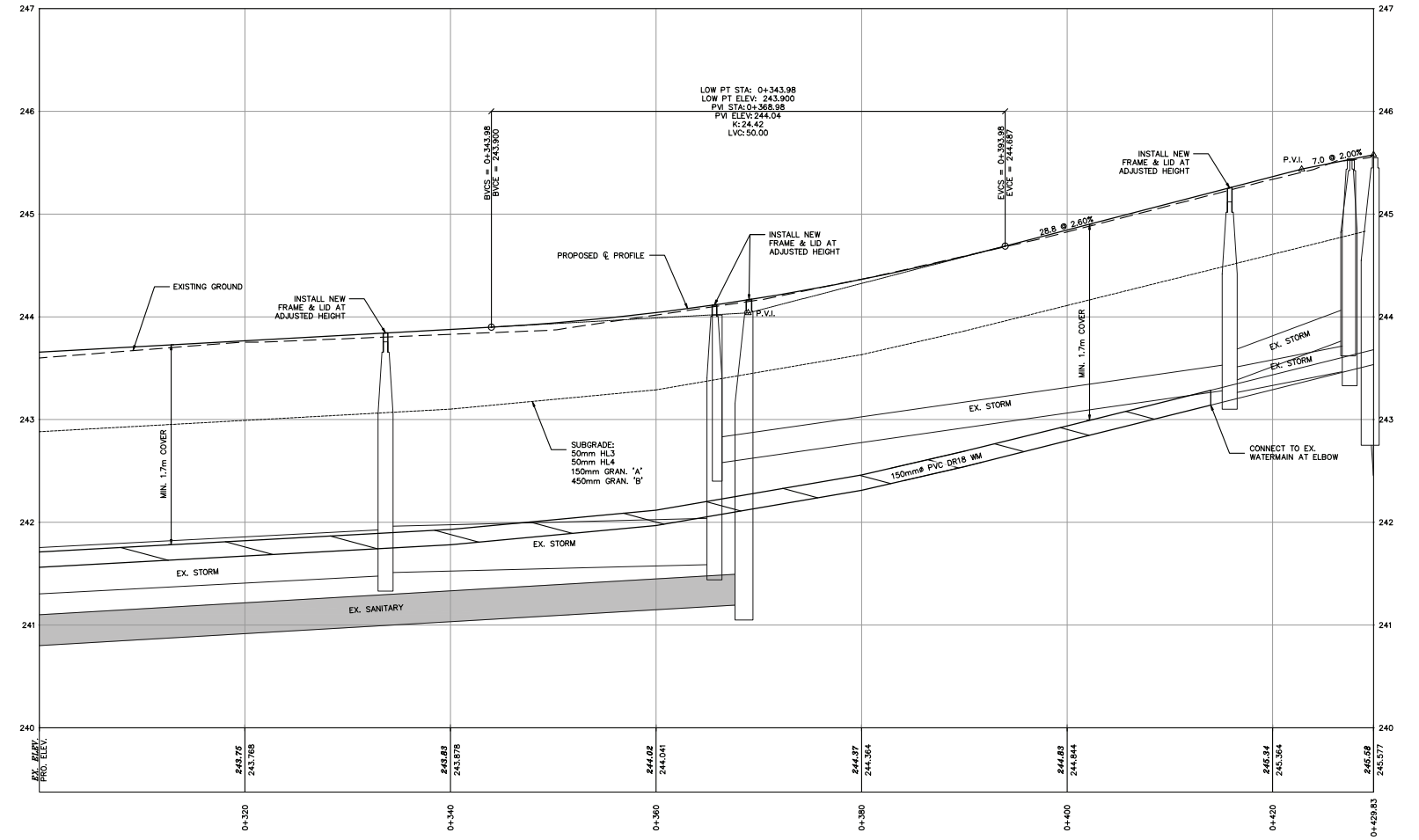
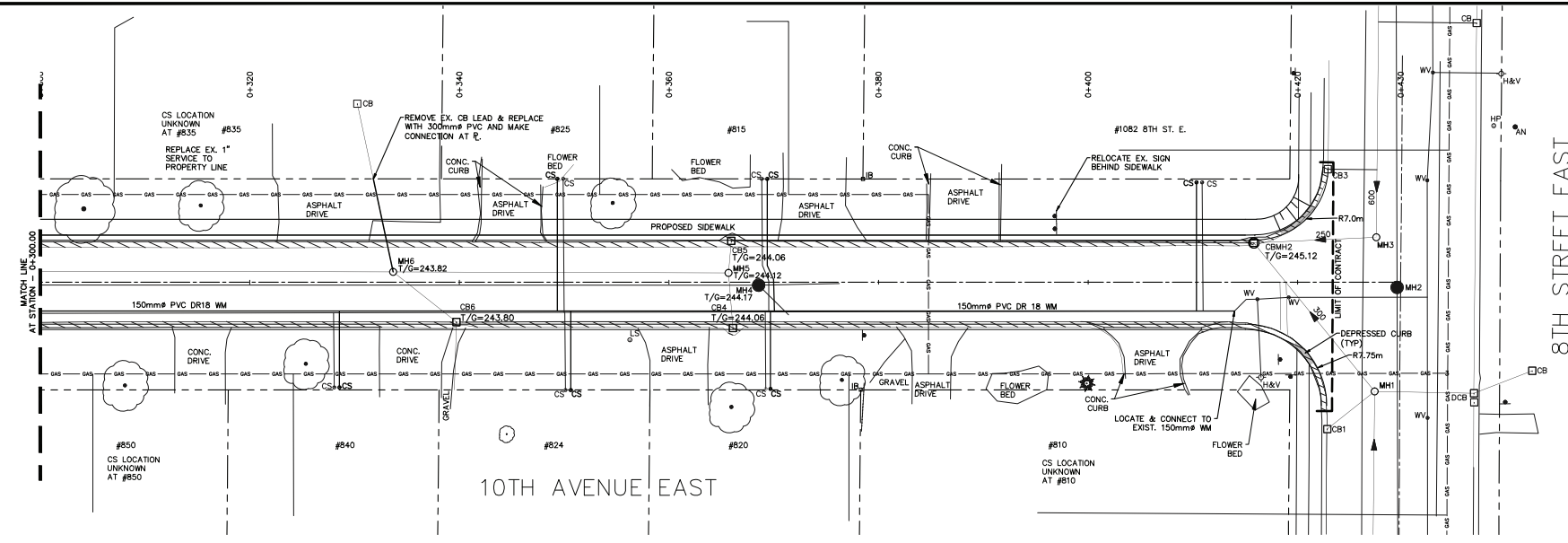
Seal not valid unless signed and dated

GENVAR
HENDERSON PADDON
 & ASSOCIATES (A Division of GENVAR Consultants LP)
 CIVIL & ENVIRONMENTAL ENGINEERING CONSULTANTS
 OWEN SOUND • THE BLUE MOUNTAINS • GRIMSBY • HANOVER
 PHONE (519) 376-7612 SINCE 1972

PLAN AND PROFILE
STA. 0+300 TO STA. 0+430
10TH AVENUE EAST
ROAD RECONSTRUCTION

Client: CITY OF OWEN SOUND	
Design: AAG	Scale: H 1:250 V 1:25
Drawn: AAG	H 1:500 V 1:50
Checked: QLP	Approved:
Date: JAN. 2009	

DRAWING No. **100067-07**



G:\2008\1001\100667\plan\paddon\100667-TS-11.dwg Feb 20, 2009 - 2:10pm